

# Fermat-1 RM 500MD Log

Format: Fermat-1 RM Resistivity Log

Vertical Scale: 1:500

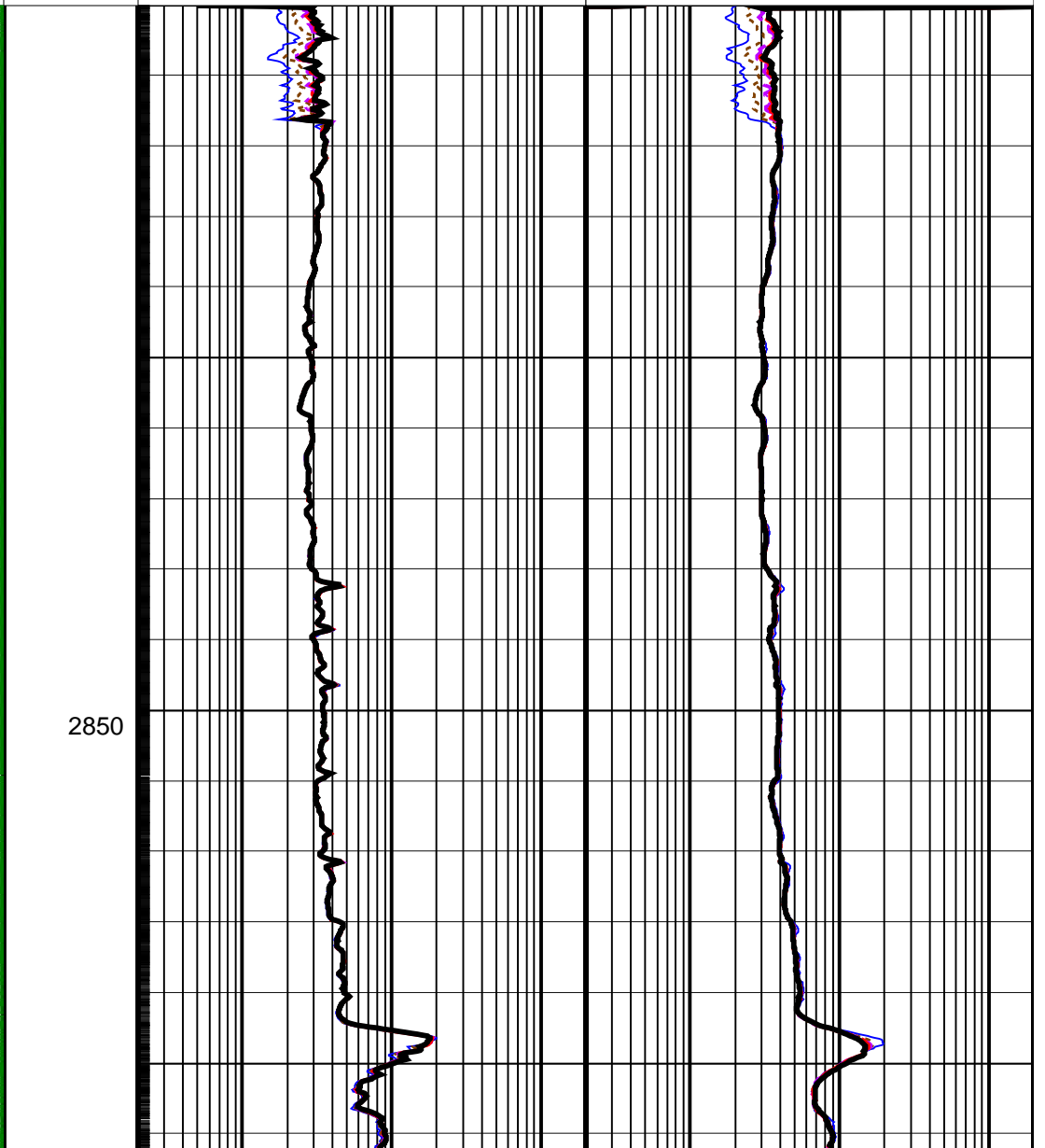
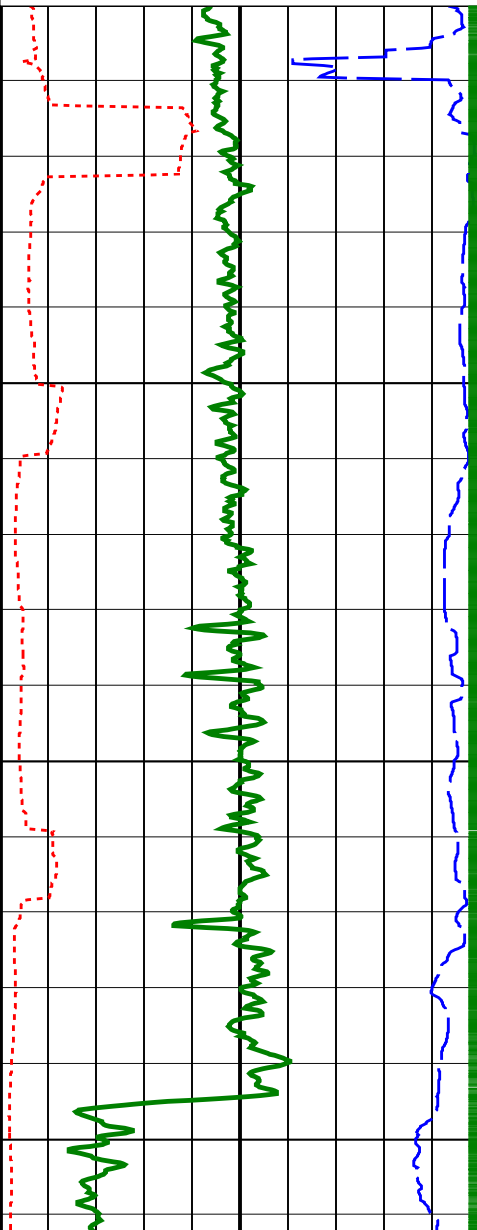
Graphics File Created: 07-Jan-2009 18:23

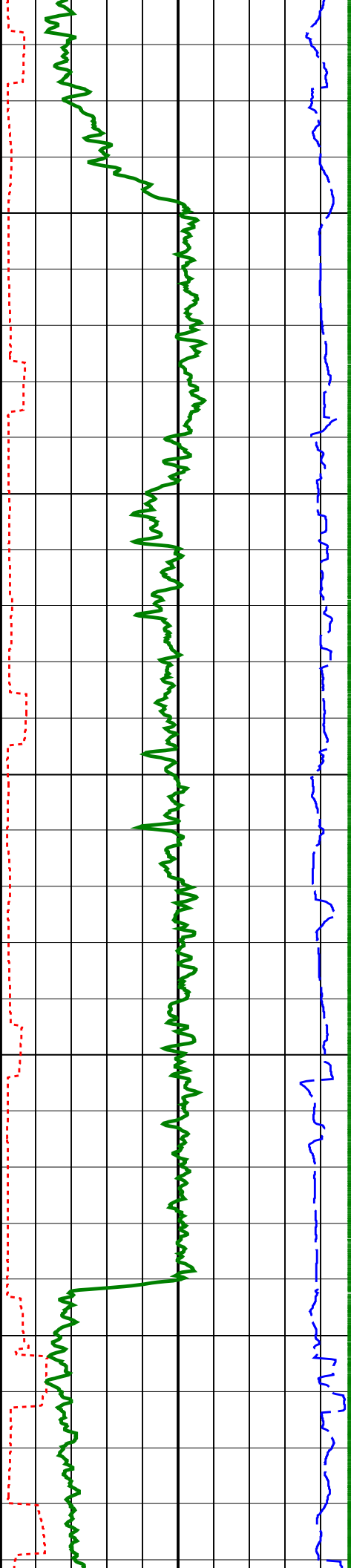
## PIP SUMMARY

├ ARC Gamma Ray Samples

└ ARC Resistivity Samples

	<b>ARC Phase-Shift Resistivity 40-in. at 2 MHz (P40H)</b> 0.2 (OHMM) 200	<b>ARC Attenuation Resistivity 40-in. at 2 MHz (A40H)</b> 0.2 (OHMM) 200
	<b>ARC Phase-Shift Resistivity 34-in. at 2 MHz (P34H)</b> 0.2 (OHMM) 200	<b>ARC Attenuation Resistivity 34-in. at 2 MHz (A34H)</b> 0.2 (OHMM) 200
	<b>ARC Phase-Shift Resistivity 28-in. at 2 MHz (P28H)</b> 0.2 (OHMM) 200	<b>ARC Attenuation Resistivity 28-in. at 2 MHz (A28H)</b> 0.2 (OHMM) 200
	<b>ARC Phase-Shift Resistivity 22-in. at 2 MHz (P22H)</b> 0.2 (OHMM) 200	<b>ARC Attenuation Resistivity 22-in. at 2 MHz (A22H)</b> 0.2 (OHMM) 200
	<b>ARC Phase-Shift Resistivity 16-in. at 2 MHz (P16H)</b> 0.2 (OHMM) 200	<b>ARC Attenuation Resistivity 16-in. at 2 MHz (A16H)</b> 0.2 (OHMM) 200
Rate of Penetration, Averaged over Last 5ft (ROP5_RM) 200 (M/HR) 0		
ARC Resistivity Time After Bit (TAB_ARC_RES) 0 (HR) 10		
ARC Gamma Ray (GR_ARC) 0 (GAPI) 200		

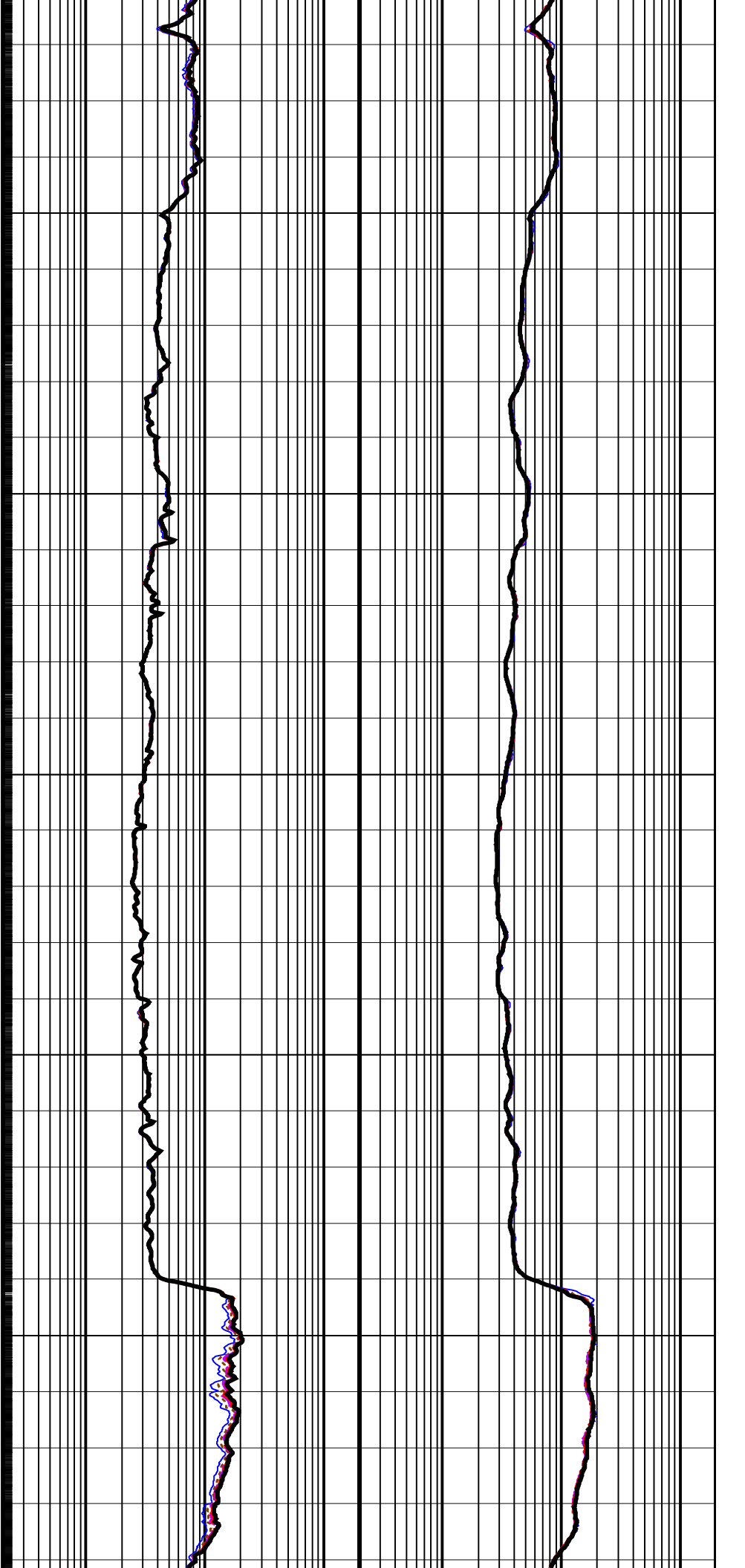


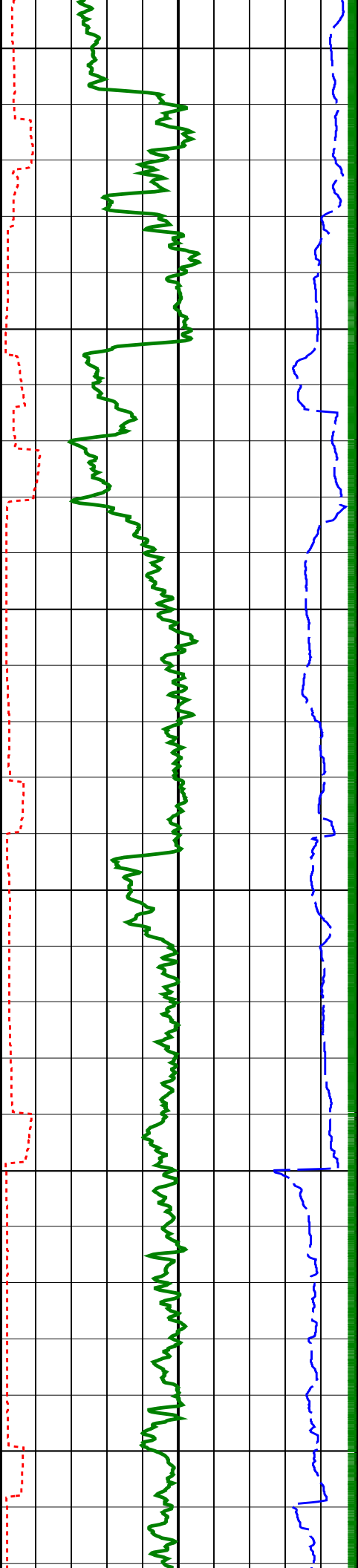


2900

2950

3000

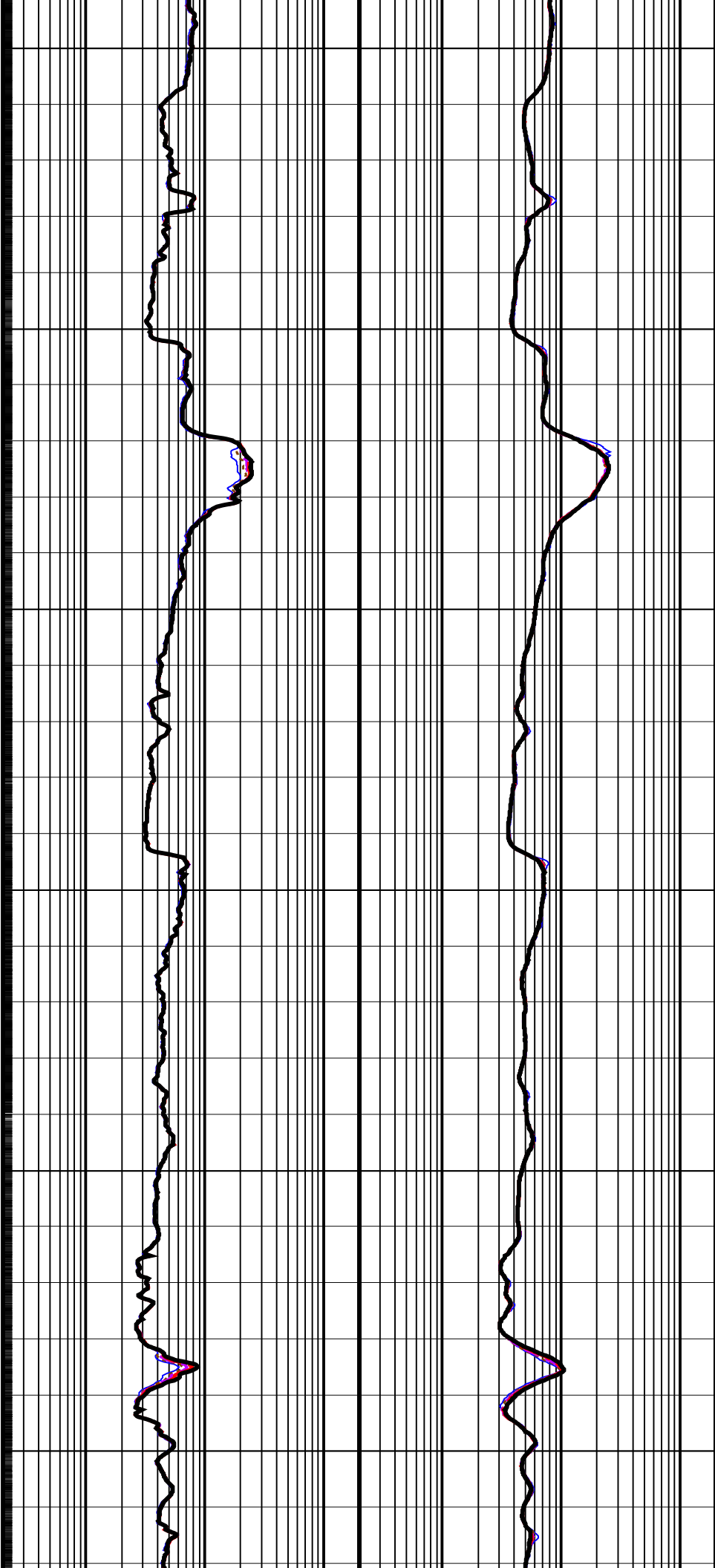


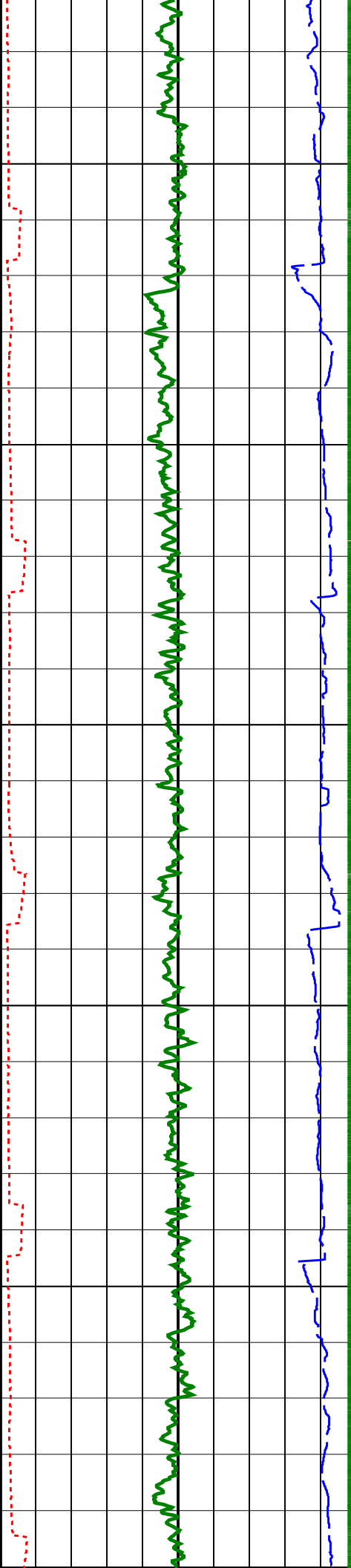


3050

3100

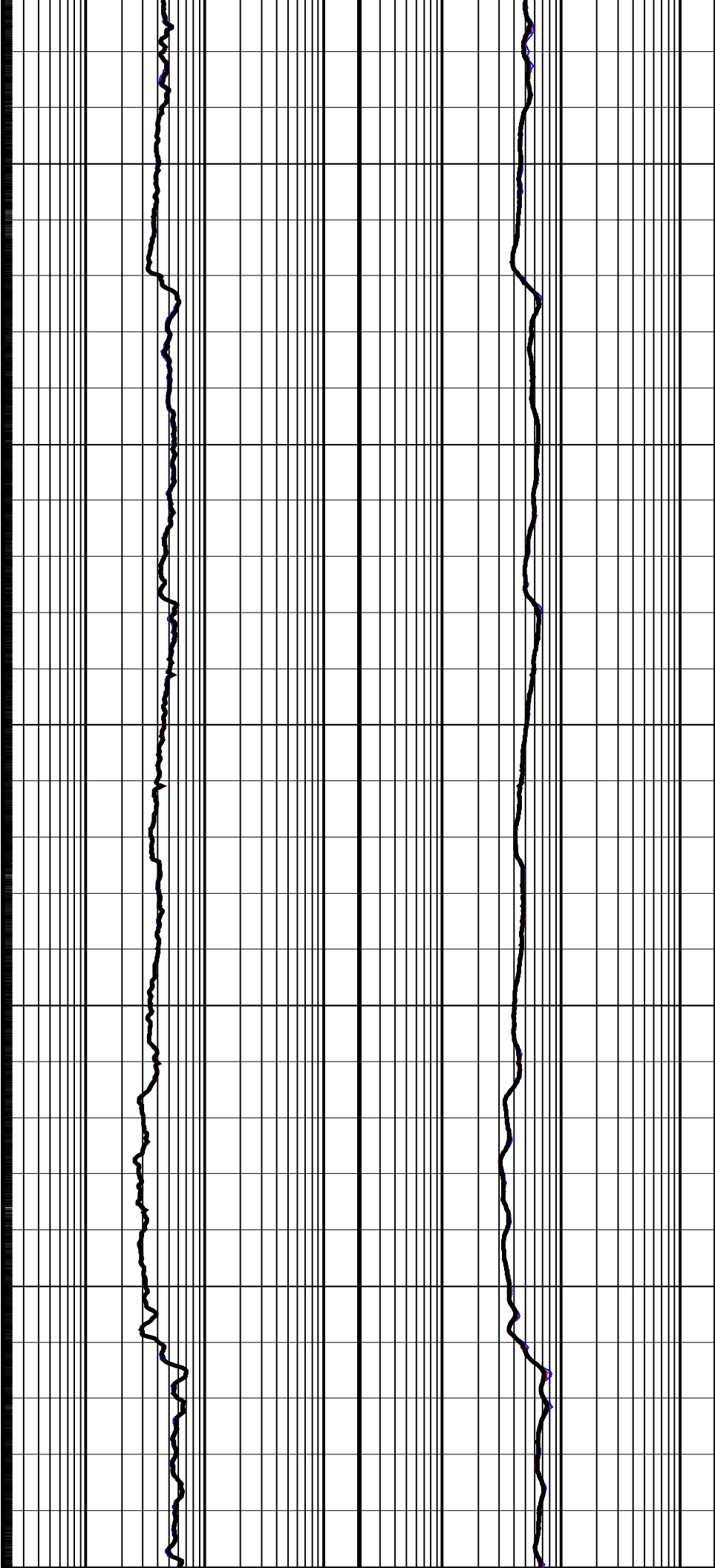
3150

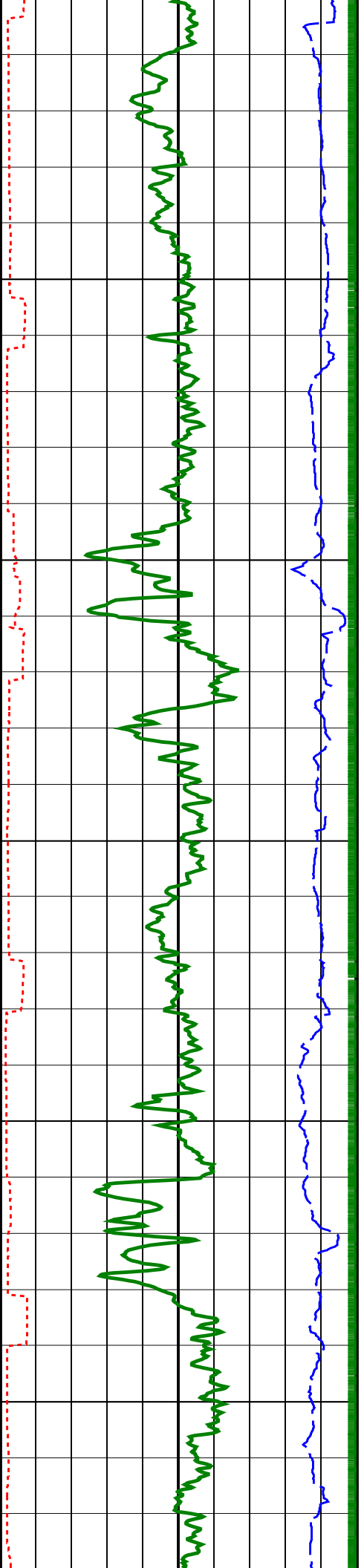




3200

3250

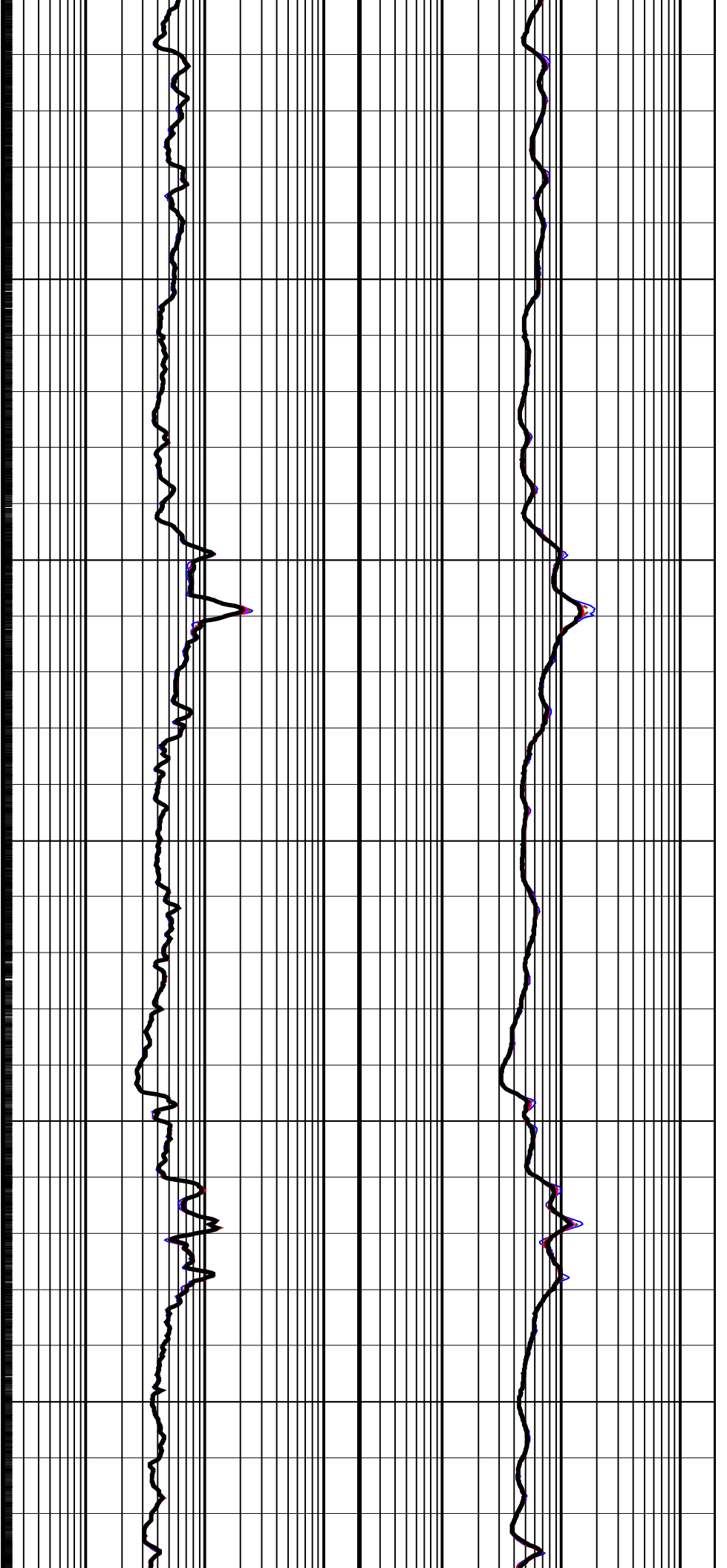


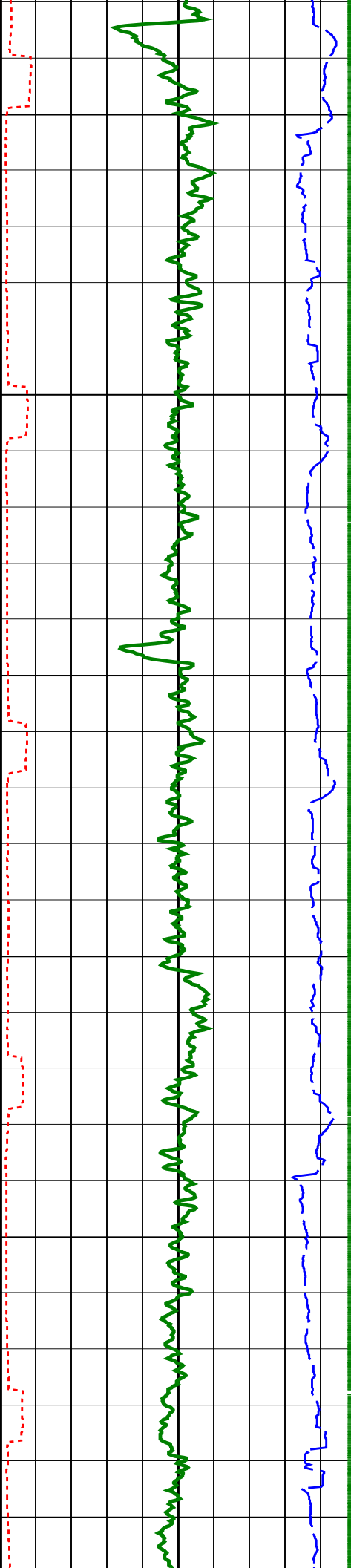


3300

3350

3400

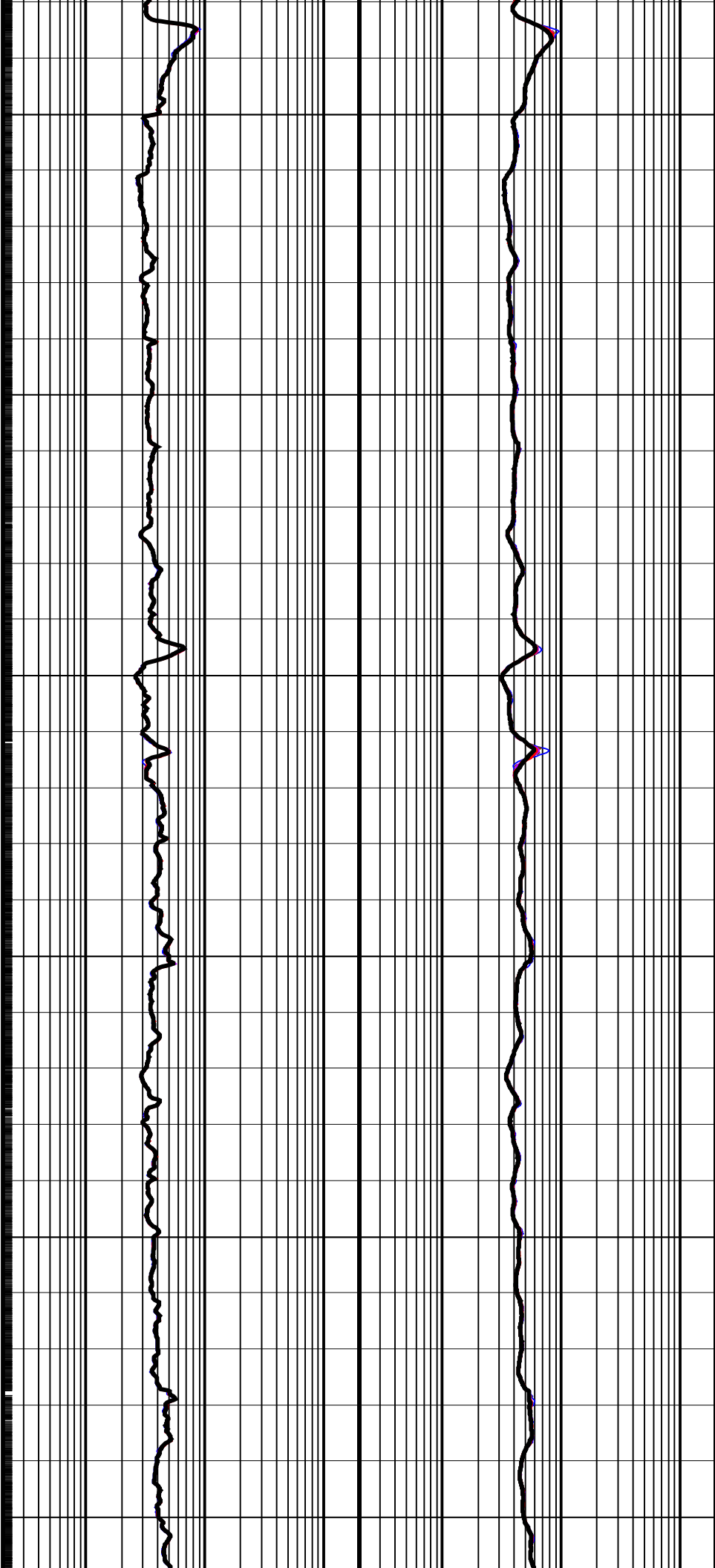




3450

3500

3550



<b>ARC Gamma Ray (GR_ARC)</b> 0 (GAPI) 200	<b>ARC Phase-Shift Resistivity 16-in. at 2 MHz (P16H)</b> 0.2 (OHMM) 200	<b>ARC Attenuation Resistivity 16-in. at 2 MHz (A16H)</b> 0.2 (OHMM) 200
<b>ARC Resistivity Time After Bit (TAB_ARC_RES)</b> 0 (HR) 10	<b>ARC Phase-Shift Resistivity 22-in. at 2 MHz (P22H)</b> 0.2 (OHMM) 200	<b>ARC Attenuation Resistivity 22-in. at 2 MHz (A22H)</b> 0.2 (OHMM) 200
<b>Rate of Penetration, Averaged over Last 5ft (ROP5_RM)</b> 200 (M/HR) 0	<b>ARC Phase-Shift Resistivity 28-in. at 2 MHz (P28H)</b> 0.2 (OHMM) 200	<b>ARC Attenuation Resistivity 28-in. at 2 MHz (A28H)</b> 0.2 (OHMM) 200
	<b>ARC Phase-Shift Resistivity 34-in. at 2 MHz (P34H)</b> 0.2 (OHMM) 200	<b>ARC Attenuation Resistivity 34-in. at 2 MHz (A34H)</b> 0.2 (OHMM) 200
	<b>ARC Phase-Shift Resistivity 40-in. at 2 MHz (P40H)</b> 0.2 (OHMM) 200	<b>ARC Attenuation Resistivity 40-in. at 2 MHz (A40H)</b> 0.2 (OHMM) 200

**PIP SUMMARY**

- + ARC Gamma Ray Samples
- + ARC Resistivity Samples

**IDEAL Version: ID13\_0C\_14**  
IDF